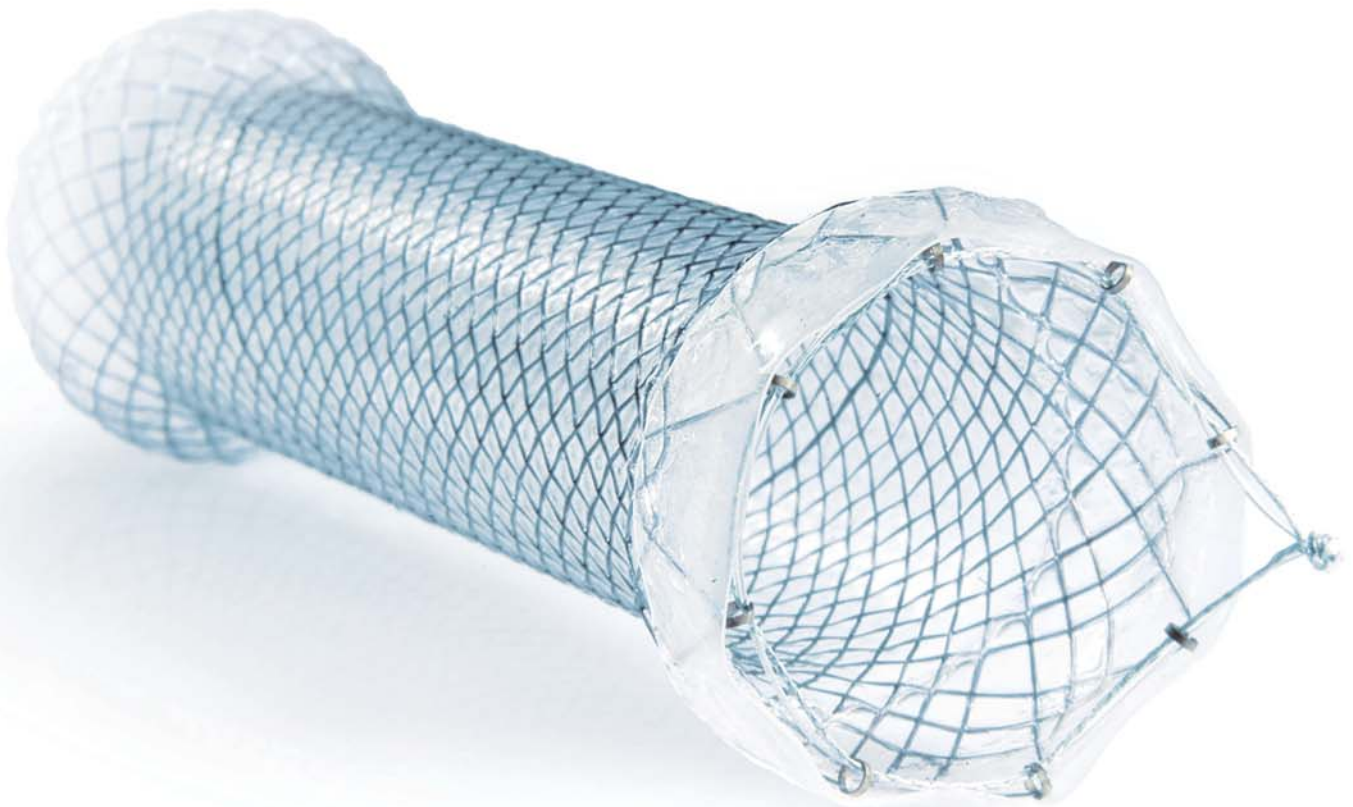


Softcup esophageal stents

High-seated esophageal stenoses place special demands on the stent. Unpleasant irritative stress results for the patient owing to stent positioning in this extremely sensitive area just under the pharynx. The Softcup oesophagus stent from MICRO-TECH is equipped with a particularly soft proximal stent end, which makes the stent as pleasant as possible for the patient.

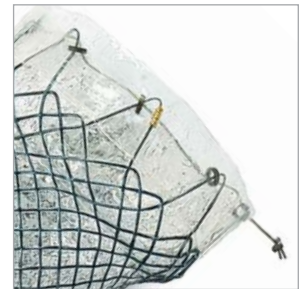


Performance Characteristics:

- self-expanding
- Nitinol mesh with atraumatic ends
- proximal Softcup design
- excellent positional stability
- high radial force
- resistant and elastic covering
- complete covering
- high radiopacity
- extraction threads for removal and repositioning
- guide wire-compatible up to 0.035 inches



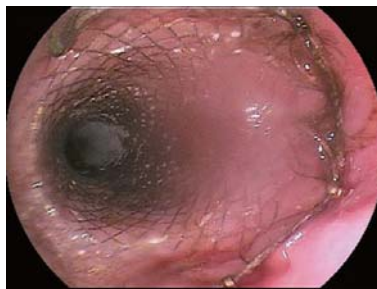
X-ray marking



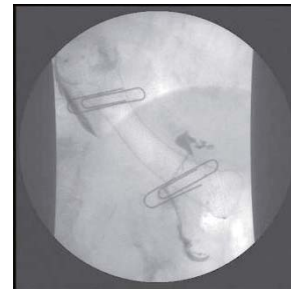
Extraction thread

Successful in practical use

The Softcup esophageal stent is completely covered and reduces the irritative stress for the patient with its particularly soft proximal tulip made of silicone. Its special design and the high radial force render the stent extremely positionally stable and guarantees a very snug fit on the esophageal wall. The good radiopacity and additional X-ray markings at significant points also facilitate orientation during stent placement.



View into the released stent



Released stent



Maximum hold, maximum comfort

The special design of the Softcup esophagus stent ensures excellent positional stability and is gentle on the patient at the same time: the soft end reduces the unpleasant sensation of carrying a foreign body in the esophagus.

Specifications:

REF	Centre Dia. (mm)	End Dia. (mm)	Length (mm)	Covering (mm)	End design	
					proximal	distal
Stents with end-to-end covering						
ST31-234.20.100	20	26	100	100	softcup	spherical
ST31-234.24.120	24	30	120	120	softcup	spherical